

Multi Wireless Guitar

for Wii™

Designed for use with RockBand™ and Guitar Hero® games.

Model: DUS0273

Nintendo® and Wii™ are either registered trademarks or trademarks of Nintendo® of America, Inc. This product is not sponsored, endorsed or approved by Nintendo®.

Thank you for purchasing this Multi Wireless Guitar. We hope you enjoy it.

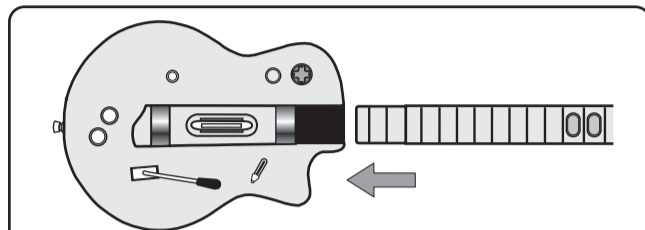
For your personal safety and for the safety of others, please carefully read this instruction manual as well as the instruction manuals that came with your game consoles and games.

PRECAUTIONS

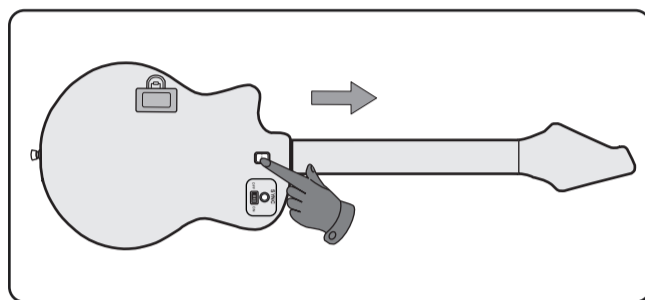
- Make sure to read the Instruction Manual of the Multi Wireless Guitar before using the product.
- If you have any health concerns, please consult with your physician prior to using the Multi Wireless Guitar.
- If at any time during game play you feel achy, numb, tingling or anything else abnormal, please take a break from playing. Blockhead recommends taking frequent breaks to prevent any of the above from happening.
- Keep all liquids away from this product. Getting this product wet will void your warranty.
- Do not insert objects of any kind into the product as this may cause damage or a fire hazard and void your warranty.
- Make sure small children are supervised while playing.
- Keep the Multi Wireless Guitar out of environments of extreme heat and extreme cold.
- If you have any technical or functional problems with the Multi Wireless Guitar, please contact Customer Service and do not try to modify the product or fix the problem yourself as this would void your warranty.
- When the Multi Wireless Guitar is not in use, make sure to store it properly for both safety and preservation of the product.

Quick Setup Guide

- Slide the guitar neck into the guitar body as shown below. Make sure nothing is caught between the neck and body while assembling.

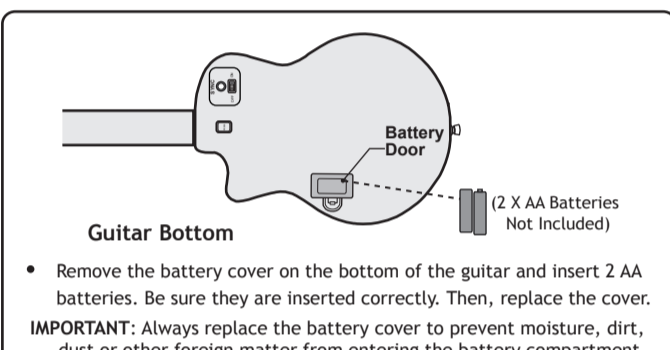


- To detach the guitar neck from the body, press the connect button and simultaneously pull out the neck.

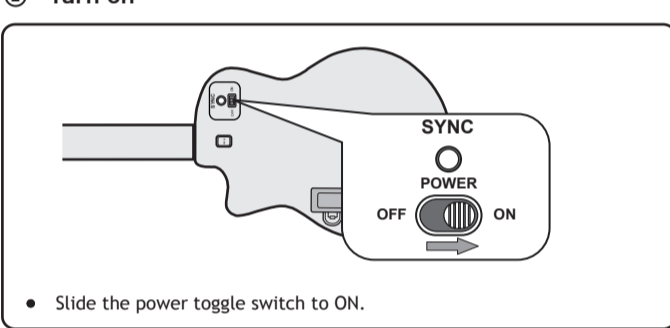


Wii Guitar Hero

1 Install batteries

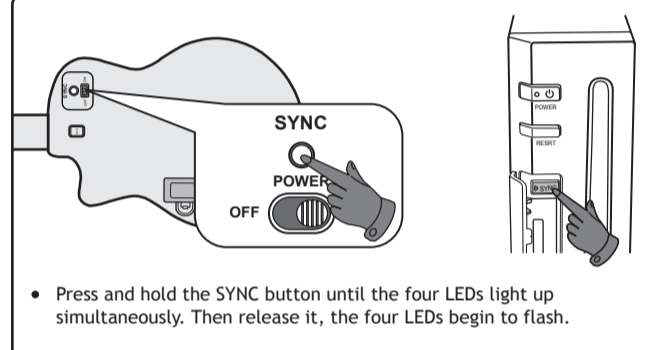


2 Turn on



Wii Guitar Hero

3 Connect

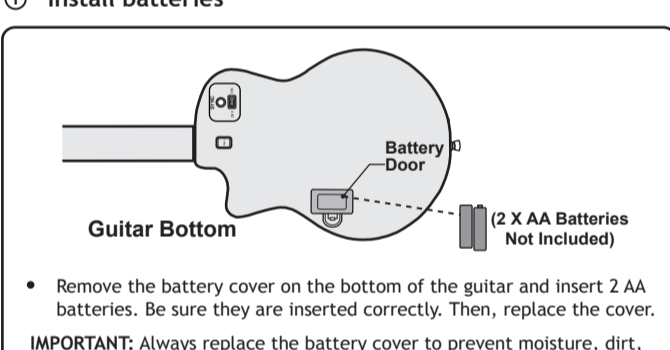


Note:

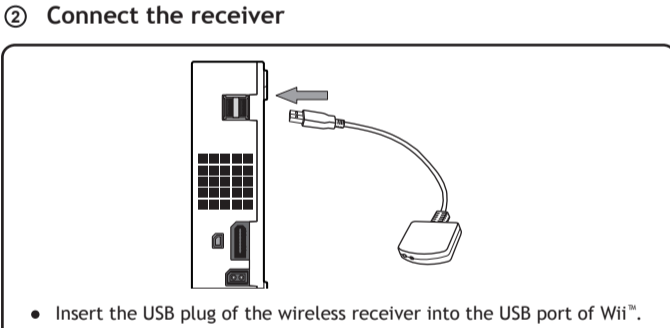
- Do not connect the attached receiver when you play Guitar Hero.
- For playing instruction, see the manual of Guitar Hero.
- When you want to play Rock Band™, please turn off the guitar first and follow the instructions below.

Wii Rock Band

1 Install batteries

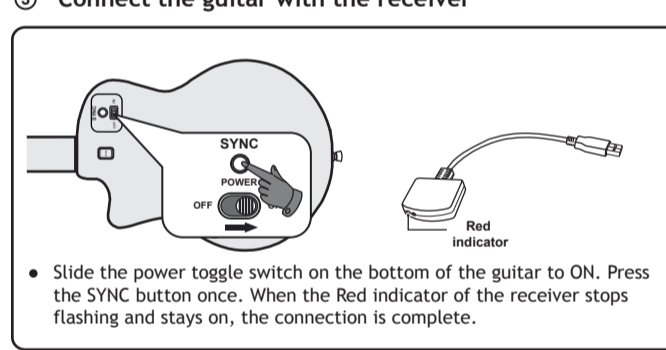


2 Connect the receiver



Wii Rock Band

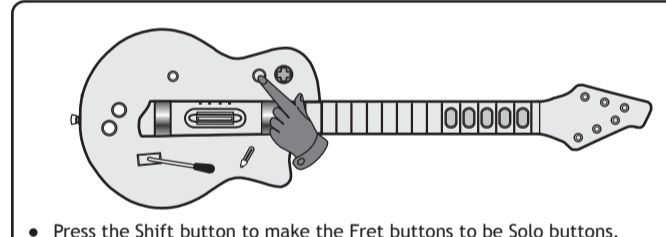
3 Connect the guitar with the receiver



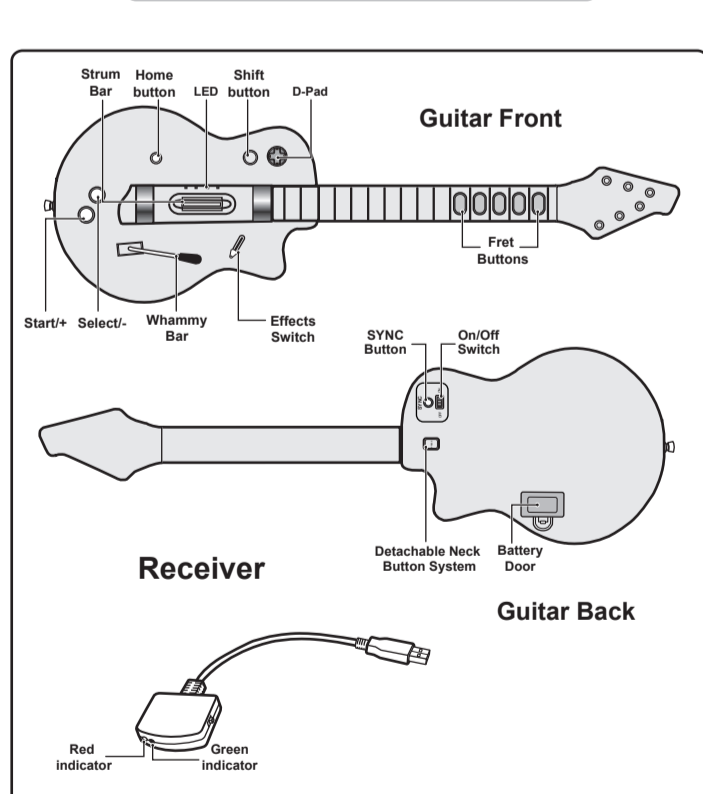
Notes:

- If connection fails, make sure your operation is right and repeat connecting.
- For playing instruction, see the manual of Rock Band™
- When you want to play Guitar Hero, please turn off the guitar and remove the receiver first and follow the instructions in the previous section.

Shift Fret Buttons to Solo Buttons



Button Configuration



WARRANTY AND TECHNICAL SUPPORT

Every Blockhead branded product comes with a 90 day warranty (U.S. Only). Blockhead will replace, repair or refund any defective products or components at no charge to you within 90 days of the purchase date. This warranty does not apply if the Blockhead branded product has been damaged by misuse, neglect, or reasons unrelated to defective materials or assembly. Blockhead is not responsible or liable for loss of data or loss of equipment use. You must retain a copy of your original receipt for warranty support.

For support on Blockhead products, contact us by visiting www.blockheadgaming.com or call us at 727-431-0650.

For general questions, comments, information or grammar tips, email us at info@blockheadgaming.com.

FCC INFORMATION

This product has been tested and found to comply with the limits for a class B digital device, pursuant to part 15 of the FCC rules. These limits are designed to provide reasonable protection against harmful interference in a residential installation. This equipment generates, uses, and can radiate radio frequency energy and, if not installed and used in accordance with the instructions, may cause harmful interference to radio communications. However, there is no guarantee that interference will not occur in a particular installation. If this equipment does cause harmful interference to radio or television reception, which can be determined by turning the equipment off and on, the user is encouraged to try to correct the interference by one or more of the following measures:

- Reorient or relocate the receiving antenna.
- Increase the separation between the equipment and the receiver.
- Connect the equipment into an outlet on a circuit different from that to which the receiver is connected.
- Consult the dealer or an experienced radio/TV technician for help.

Note: Changes or modifications not expressly approved by the party responsible for compliance could void the user's authority to operate equipment.